

# STERILE MATE LLC

KEEPING YOU SAFE

HEALTHCARE GENERAL CONTRACTING

## Electrical. Plumbing. Construction.

Licensed technicians with years of expertise across healthcare, industrial, commercial, and residential contracting. Fully vetted for healthcare compliance. Dispatched through AskIsaac intelligent operations.

HUB Certified

Licensed Technicians

ICRA Compliant

Joint Commission Ready

# CORE CAPABILITIES

Four Disciplines. One Contractor.

## Electrical



- Electrical Panel Upgrades
- Medical Equipment Wiring
- Emergency Power & Generators
- Lighting & Fire Alarm Systems
- Code Compliance Retrofits
- Circuit Install & Repair

## Plumbing



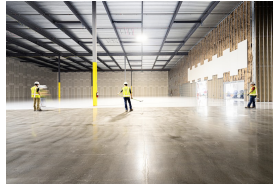
- Healthcare Water Systems
- Medical Gas Piping
- Gas Line Installation & Repair
- Leak Detection & Emergency
- Backflow Prevention
- Drain & Sewer Systems

## Construction



- Room Buildouts & New Build
- Patient Area Remodels
- Drywall, Framing, Flooring
- Medical-Grade Finishes
- ADA Compliance
- Demolition & Tenant Build-outs

## Repairs



- Emergency Leak Repair
- Gas Line Emergencies
- Electrical Troubleshooting
- HVAC & Fixture Support
- Preventive Maintenance
- 24/7 Priority Response

# HEALTHCARE COMPLIANCE

## Why Standard Contractors Fail in Healthcare

Working in a hospital is fundamentally different. Patient safety, infection control, and regulatory compliance create requirements most contractors don't understand.

Compliance Area	Standard GC	Sterile Mate
ICRA (Infection Control)	Unfamiliar	Fully Compliant
ILSM (Life Safety)	Rarely	Always
Background Checks	Basic	Full Healthcare
OSHA Healthcare	General Only	HC-Specific
Joint Commission	Minimal	Embedded
Infection Barriers	Plastic Sheet	HEPA + Neg. Press.
Documentation	Basic	Audit-Ready

**RISK:** A standard contractor without ICRA compliance can trigger Joint Commission citations, shut down patient areas, and cost health systems millions.

## WHY STERILE MATE · What Sets Us Apart

- 1 One Contractor, Every Discipline**  
 Electrical, plumbing, construction — all under one roof. No subcontractor coordination headaches.
- 2 6+ Years Healthcare DNA**  
 Not a commercial contractor learning healthcare. We were born in it — from COVID-19 frontlines to capital projects.
- 3 Audit-Ready Documentation**  
 Complete packages ready for Joint Commission, state inspection, or internal audit.
- 4 No Job Too Small**  
 From a single leaking faucet to a \$500K capital project — same professionalism, same compliance.
- 5 Licensed Master Technicians**  
 Current state licenses with years of healthcare, industrial, and commercial experience.

**EVERY TECHNICIAN IS**  
 Background checked & cleared for healthcare access · ICRA trained (Class I-IV) · OSHA Healthcare certified & badge-compliant · Experienced in live patient area work

# OUR PROCESS

## From Estimate to Closeout

---

**01****Site Assessment & Compliance Review**

Evaluate work area, identify ICRA class, document conditions.

**02****Detailed Scope & Transparent Estimate**

Clear line items — materials, labor, timeline, compliance.

**03****Healthcare-Compliant Execution**

Infection barriers, noise management, patient safety protocols.

**04****Quality Inspection & Testing**

Every circuit tested, every joint pressure-checked.

**05****Audit-Ready Documentation Package**

As-builts, certificates, checklists, photo records.

**POWERED BY ASKISAAC · INTELLIGENT DISPATCH**

Every Sterile Mate job is coordinated through **AskIsaac** — our on-demand intelligence platform and command center built to revolutionize communication between healthcare supply chain and the skilled trades behind facilities management. From a single dashboard, facilities teams submit quote requests, route backorder searches, dispatch work orders to vetted trades partners, and track turnkey installations in real time — eliminating the email chains, phone tag, and blind handoffs that slow hospitals down every day.

# CAPABILITIES STATEMENT

Medical, Dental & Industrial · Keeping You Safe

## CORE COMPETENCIES

- Healthcare General Contracting
- Electrical & Medical Equipment Wiring
- Plumbing & Medical Gas Piping
- AAMI ST108 RO Water Systems
- Commercial Water Filtration & Softening
- Room Buildouts & Remodels
- ICRA Infection Control Barriers
- Joint Commission-Ready Projects
- Surgical Instruments (ENT, General)
- Sterile Processing Equipment
- Dialysis Concentrates
- EVS / Janitorial Supplies
- Healthcare Software (Implant Mgmt, Rebates)
- Emergency & Preventive Maintenance
- Turnkey Project Management
- 24/7 Priority Response

## NAICS CODES

CODE	DESCRIPTION
236220	Commercial & Institutional Building Construction
238210	Electrical Contractors & Other Wiring Installation
238220	Plumbing, Heating & Air-Conditioning Contractors
334517	Commercial General Contractors
339112	Surgical & Medical Instrument Manufacturing
423450	Medical / Dental / Hospital Equipment Wholesalers
221310	Water Supply & Irrigation Systems
518210	Data Processing & Hosting

## CERTIFICATIONS & IDENTIFIERS

CAGE CODE	MBE CERT #	DUNS	HUB VENDOR #
9GH66	24-02-16180	118062870	536463

Also: SAM Registered · Licensed GC (TX) · ICRA Certified (I-IV) · OSHA Healthcare Certified · AWWA IAF · TWQA VIPA IA-VME-1505-20 · IJCSA Green Certified

**CONTACT**  
 Sterile Mate LLC · Houston, TX 77060 · 800.988.3892 · 281.456.3458 · george.broughton@sterilemate.com · sterilemate.com



LET'S TALK ABOUT

# Your Next Project

---

Whether it's a capital project, emergency repair, room buildout, or facility remodel — Sterile Mate has the licenses, experience, and healthcare compliance to get it done right. Every job is coordinated through **AskIsaac**, our intelligent dispatch platform.

## George Broughton III

Founder & CEO · Sterile Mate LLC

[george.broughton@sterilemate.com](mailto:george.broughton@sterilemate.com)

Office 281.456.3458 · Mobile 323.243.9139

[www.sterilemate.com](http://www.sterilemate.com) · [AskIsaac.io](http://AskIsaac.io)

12941 North Freeway, Suite 800-9 PMB1056, Houston, TX 77060

HUB Certified

SAM Registered

Licensed GC

ICRA Compliant

OSHA HC

Sterile Mate LLC · HUB Certified · MBE Certified · Keeping You Safe